

The new, simple approach to greater productivity and problem-free industrial, production, manufacturing and operational assets

# Enterprise Asset Management Excellence the Plant and Equipment Wellness Way

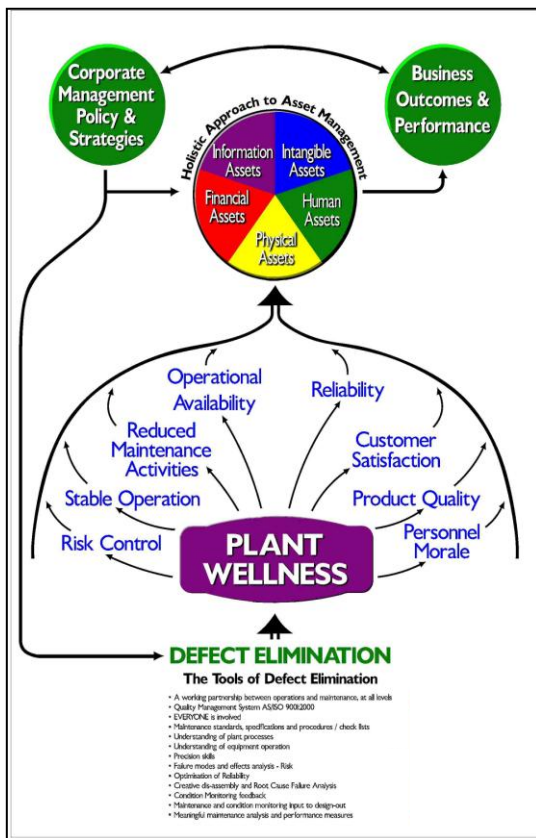
*“Discover and use simple life cycle practices to create highly reliable assets.”*

*Register your name for our 2-day training course*

In Australia we run public courses in Sydney, Melbourne, Brisbane and Perth. when five (5) or more people are registered in that city.

*(Save money and run the course in-house if you have 5 or more people.)*

## The easy way to world class enterprise asset management



This course is for people and businesses whose current asset management and maintenance management do not work well enough and want to find new, simple and truly effective ways to:

- make plant and equipment run consistently at highest availability
- produce at full capacity with 100% first-pass-quality
- make the most operating profit and need to be sure to get there
- reduce their production costs and wastes
- get the utmost throughput from existing plant without new capital
- make higher productivity inevitable.

Attend the 2-day 'Plant and Equipment Wellness Way to Enterprise Asset Management Excellence' and discover a new, simple, practical and highly effective asset management methodology for becoming best-in-class. Learn to build just those business processes you need that keep your operating costs low and the productivity from your operational physical assets

high. Discover how simple it is to focus on the right activities to create a world class enterprise asset management system which drives world class plant and equipment performance in your operation.

## Learn how simple it is to keep your operating costs low and your equipment uptime high

In this course you learn exactly what to focus on to get world-class operational asset reliability. The Plant and Equipment Wellness Way is a simple and sound life cycle asset management methodology that focuses your efforts on doing what is important to bring high productivity and lasting performance improvements to your operation. You learn the few critically

### MORE TRAINING

NSW – VIC – QLD – WA

The Plant Wellness Way to Maintenance Management Mastery

Maintenance Planning and Scheduling for Reliability

The Plant Wellness Way to Asset Management Excellence

Applied Reliability Engineering for Industrial Plants

SEE OUR WEBSITE FOR DETAILS AND PRICING

[www.lifetime-reliability.com](http://www.lifetime-reliability.com)

important details you need to have in-place to get best equipment uptime and high profit from your operating physical assets. You leave the training with a new and better set of reliability improvement methods and a clear and sound appreciation of where to focus your business' efforts to get maximum asset productivity and high operating profits. You:

- **Discover the processes and systems that solve Enterprise Asset Management (EAM), reliability and maintenance problems.**
- Understand why your business processes (projects, engineering, operations, finance, and quality) need to interact correctly to get lasting low operating costs and high plant availability, and learn how that is done.
- **Discover the novel, innovative and even revolutionary concepts needed to be a world-class operation.**
- Learn the fundamental practices and understandings vital for successful enterprise asset management today.
- **See how to achieve your business plans and profits with the systems and processes of Plant and Equipment Wellness.**
- Manage your plant and equipments' life cycle from concept through to decommissioning so you and your people make the great decisions that bring business and personal success.
- **Learn to integrate design, operations, maintenance, and finance for better business risk management**
- Why it is critical to your success to become quality focused if you want to get 100% right-first-time performance.

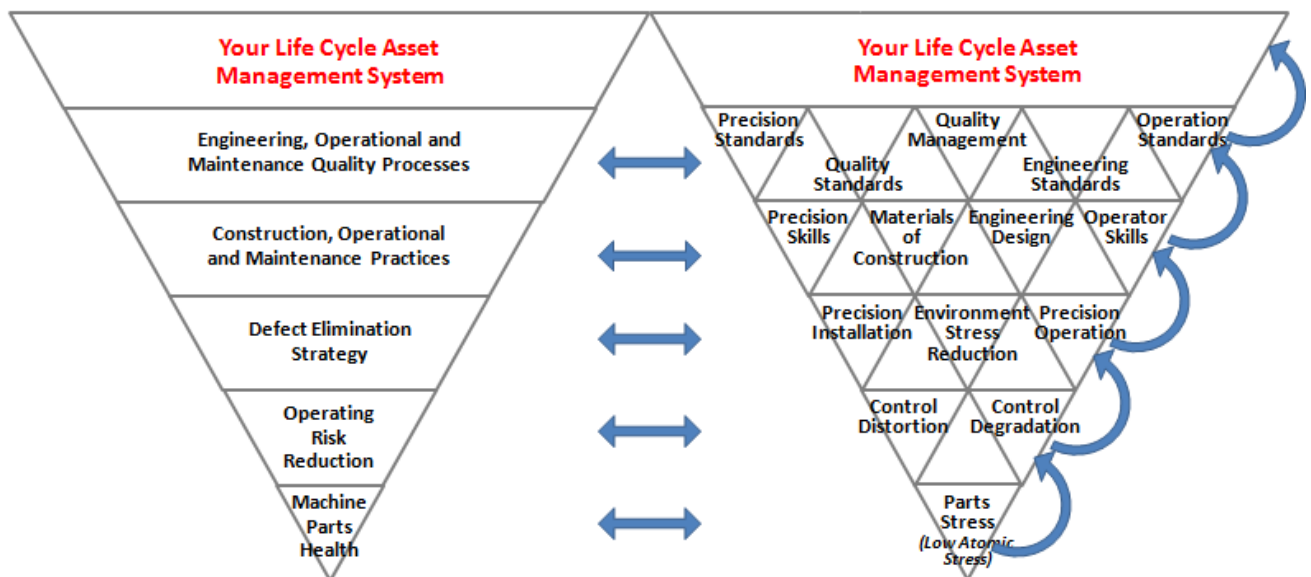


With the right systems, the right methods and the right practices of Plant Wellness in your operation you can have:

- 100%-dependable full production,
- in-full-on-time delivery,
- continual first-pass quality product,
- sustained maximum throughput,
- no penalty claims,
- no breakdowns,
- non-stop highest plant availability,
- dramatically extended time between failures,
- free extra production from your 'hidden factory'.

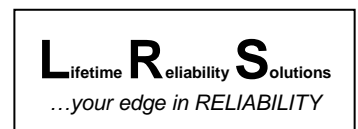
## New methods, practices and knowledge of the Plant Wellness Way

# The Plant Wellness Way



[www.lifetime-reliability.com](http://www.lifetime-reliability.com)

Learn new solutions to life-cycle issues affecting your operating plant and equipment performance. Discover simple, certain methods to produce the highest pay-offs from industrial and production plant and equipment. Find out how to involve and motivate your workforce to minimize operating risks and maintenance problems, and produce maximum throughput. Learn how to make your plant and equipment highly reliable.





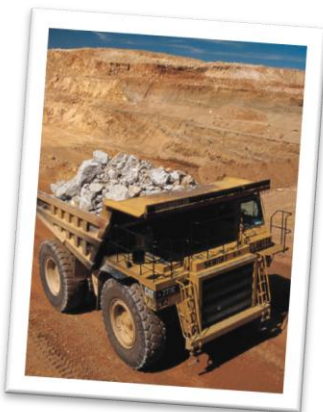
Attend this course and **discover** the specific methods that really make the difference in getting highly productive operating plant. Learn how to use them to improve your business' performance. You get the right information and methods to improve your business processes and its operating and maintenance practices, so world-class performance becomes natural, normal and inevitable for you. A Plant Wellness driven operation will deliver least cost production that delivers big operating profit margins. It does not matter the industrial or manufacturing business you do.

## Bring world-class equipment performance to your operation

The training content coverage in the 'Plant and Equipment Wellness Way to Enterprise Asset Management Excellence' course is thorough and includes the work processes and the business systems needed to coordinate and achieve maximum production plant and equipment performance. Find out how to institute the few vital practices and systems to achieve maximum life-cycle profits from your operating plant and equipment. Be guided with the right concepts from their implications through to their masterful implementation.

During the course you discover those methods that work to deliver plant and equipment performance excellence in your business. You find out how to deliver lower production costs and higher profit margins by:

- **controlling the inherent variability in both business and operating processes to within designated limits,**
- **managing risk by reducing the likelihood of adverse incidents, along with minimising their consequences,**
- **using failure preventing quality standards throughout your plant and equipment lifetime, including capital equipment acquisition and installation,**
- **stopping human error by ensuring the accuracy and precision of human activity and intervention,**
- **minimising total life cycle costs with proactive spreadsheet modelling of what robs your operating profit.**



Developed from foundation elements of systems engineering, reliability engineering, maintenance management, operational management, risk management, industrial engineering and guided by sound financial management practices, the course provides a full coverage of the important factors that create asset management success. The training addresses three areas of content to provide you with practical and useful guidance in improving your production plant and equipment performance.

**1) Equipment Reliability** focuses on the fundamentals and understandings of what drives machine reliability. You learn the critical concepts that get the most out of your operating plant's performance. Important issues, such as maximising series process reliability, reducing operating risk with chance reduction strategies and not only focusing on consequence reduction strategies, grasping the implications of the 'physics of failure' when considering parts replacement and equipment purchases, and when to proactively apply reliability engineering on your equipment.

**2) Maintenance Management** moves you onto the proper reliability and risk strategies and methods to use, and gives you the knowledge of how to apply the right ones to each part of your operating equipment. You will learn how to develop an operational risk management model for your operation. You learn how to build total and complete maintenance plans, actions, equipment monitoring and continual improvement strategies to create the safe, sure, high reliability, low maintenance costs and full production you want. *(This plan is perhaps the most important document that you can create in the life of an operation.)*

**3) Asset Life-Cycle Management** focuses on core factors critical to successfully build and run operations for high reliability and availability. Including understanding your plant life-cycle issues, identifying what systems and practices produce most benefit and motivating your workforce to produce great results. It shows you how to combine all the prior reliability and maintenance knowledge into a lifetime strategy for your plant and equipment that moves your business toward top-class performance (and keeps it there). You will learn to use and apply all the plant wellness and equipment health 'insider secrets' that make all the difference.

You are taught the vital understandings and methods you need to know and use to get world-class asset maintenance performance and results. Discover both the leading-edge and the best classic strategies that make equipment run stoppage-free for longer; produce at maximum sustainable capacity with first-pass quality throughput, and make industrial operations highly profitable. You learn to focus your maintenance methods and practices on defect removal and failure elimination in every phase of the life-cycle. You'll come out of the training understanding how to intentionally make your business processes and production equipment more and more reliable in ways that turns average organisations into world-class operations. This course is packed with new insights and





techniques that you can use every day in your operation to make it better, faster, leaner, safer, waste-free and less costly.

In the course you learn exactly how to ensure that your machines last longer, that production quality is maintained and that delivery schedules are surely met. The best asset management and maintenance processes prevent failure by designing their business systems and business processes to produce the right outcomes. You will discover and learn to use the right principles and the proper practices of successful asset maintenance systems that you will naturally gain by imbedding Plant Wellness best practice life cycle asset and maintenance management processes into your organisation.

## Contents of The Plant and Equipment Wellness Way to Enterprise Asset Management Excellence 2-Day Course

Equipment Reliability	Maintenance Management	Asset Life Cycle Management
<p><b>Unreliability of series processes</b> (why there are so many problems day after day)</p> <p><b>Why machines fail</b> (what to look for and where before plant fails)</p> <p><b>Defect and Failure Total Cost</b> (learn why failure costs are 7-15 times more than the repair)</p> <p><b>Understanding the Physics of Failure</b> (why things fail and how to stop it)</p> <p><b>Condition Monitoring causes breakdowns</b> (why CM doesn't stop failure)</p> <p><b>Risk reduction for parts and systems</b> (how to control chance and loss)</p> <p><b>Don't waste your time using failure history to improve reliability</b> (understand and fix your real How to downtime problems)</p> <p><b>Control work quality and equipment reliability with SOPs</b> (get accurate, precision workmanship)</p> <p><b>Defect Elimination and Failure Prevention is the best protection</b> (error proofing, root cause failure removal, visual management, and more)</p> <p><b>Creating a Reliability Strategy for your Operation</b> (holistic design, operations and maintenance)</p>	<p><b>How Maintenance becomes a Profit Centre</b> (use maintenance to secure production and protect profits)</p> <p><b>The truth about Asset Risk Management</b> (why most maintenance makes little difference to your operational risk)</p> <p><b>Why Preventive Maintenance, Predictive Maintenance, Corrective Maintenance and Opportunity Maintenance don't stop Breakdown Maintenance</b> (have you made the mistake of following someone else's advice and not learning for yourself what you really should know well)</p> <p><b>Operational success needs a 10 year financial time horizon with your plant and equipment</b> (successful maintenance strategy is a long term financial commitment)</p> <p><b>Why Reliability Centred Maintenance tricks so many into thinking it will work</b> (maintenance cannot bring you reliability)</p> <p><b>TICL means you don't need Total Productive Maintenance</b> (you must have operator driven equipment reliability, but KISS)</p> <p><b>Precision Maintenance</b> (forever deliver the most reliability, availability and least costs from your operating equipment)</p> <p><b>Maintenance Strategy for Least Cost, Utmost Production</b> (design your business system processes for the least maintenance necessary)</p>	<p><b>Your business pays for everything- Total Downtime Costing</b> (calculate the massive losses each failure costs your business)</p> <p><b>Dangers and Untruths of the Stable Domain Theory</b> (what DuPont didn't discovered about their 170 businesses)</p> <p><b>Asset Management starts inside</b> (lifetime production success is an intentional outcome scientifically designed into your business processes)</p> <p><b>The Hidden Factory</b> (Lean shows where to find up to 50% more capacity for free)</p> <p><b>Business Process Reliability Analysis</b> (finding the weakness in your business processes and practices)</p> <p><b>The Production, Maintenance and Engineering Team of the future</b> (ultimately asset management success depends on the workforce)</p> <p><b>Really Useful KPIs</b> (the proactive KPIs that predict and drive reliability improvement)</p> <p><b>Accuracy Controlled Enterprise</b> (ensure best quality and accurate work is done throughout your company)</p> <p><b>Creating everlasting Plant and Equipment Wellness</b> (review how to get lifetime holistic equipment health for maximum bottom line performance)</p>

### Details on Your Presenter



**Mike Sondalini** B Eng (Hons), MBA, CP Eng.: The seminar presenter, Mike Sondalini, uses his extensive practical expertise and business experience to take attendees through a carefully structured coverage during which they learn the key knowledge, understandings and skills that **deliver practical and valuable contributions to improve asset productivity, reduce maintenance costs and maximise production performance and quality.** In engineering and maintenance since 1974, Mike's



career extends across original equipment manufacturing, beverage production, steel fabrication, industrial chemical manufacturing, quality management, project management, industrial asset management and industrial training. He uses his years of experience as a maintenance manager in business to focus on the critical success factors of what to do, and how to do it quickly and well. He shows you how you and your people can make wise asset management decisions, effectively use your resources, work expertly in the least time necessary, and continually improve your operation's productivity, efficiency and effectiveness.

## **Extraordinary 60-day Early Bird Payment Discount of 1 Day FREE**

The full 2-day course cost is \$1,600 plus GST. Included in the price are course notes, arrival tea/coffee, morning and afternoon tea/coffee with finger food and a light buffet lunch.

Pay 60-days in advance of the course date and get a very pleasing and extraordinary 50% discount off the full price. Your payment must be to us at least 60-days before the course start date to get the full discount. There is also a 30-day early bird payment discount of half-a-day free. Full price applies if you register within 30-days of the course start date. Act now to register a place and get your payment to us in time to get maximum discount.

## **Book Today to be Sure of Your Seat**

It is best to register immediately for the course if you want to be sure of a seat. Seating is limited to a maximum of 10 people and seats are allocated on a first-come-first-served basis. Complete your registration form, then chose your payment option and fax it to us at (+61 8) 9457 8642, or scan it and email to [info@lifetime-reliability.com](mailto:info@lifetime-reliability.com). Book yourself and your key people into the course now. Contact us now on mobile 0402 731 563 to confirm places are still available.

## **A 100% Money Back Guarantee**

All Attendees are afforded maximum protection at our seminars, courses and workshops by a 100% Money Back Guarantee. If, for whatever reason, you believe your expectations have not been met, your attendance fees will be totally refunded in full. As further compensation you are also allowed to keep all materials handed out during the presentation. (Guarantee is subject to booking fee being received by the due date.)



## **More Course Information Details**

Courses in Perth, Western Australia are run at Technology Park, Bentley (Opposite Curtin University). In Brisbane courses are held at the Regatta Hotel, Toowong. In Sydney we use the Vibe Hotel on Goulburn Street, and in Melbourne the Vibe on Carlton. Confirmation of registration will be emailed to the email address on the registration form and includes all venue details.

On the first-day venue doors open from 8.00am with the course starting at 8.30am and finishing at 4.30pm each day. Morning and afternoon teas are 15 minutes and lunch is 45 minutes duration. Parking is available free at the Perth venue. Please check local road maps, or the venue website, to find parking locations.

Substantial and comprehensive course notes and the full PowerPoint presentation are given to every attendee for future reference and unlimited personal use.

Attendees get a certificate of training at the end of the course.

## Your Course Registration Form and Payment Details

**1 - Select Your City:** **Enterprise Asset Management Excellence for Executives and Managers in Government and Private Industry**

- Sydney, New South Wales, Australia
- Perth, Western Australia, Australia
- Brisbane, Queensland, Australia
- Melbourne, Victoria, Australia

**2 – Course Fee:** AUD\$2,500 plus GST \$250  
**Total payment is \$2,750**

Payment is required 30 days prior the course start date. Attendees get a full set of course notes and workbook, a softcopy of the PowerPoint course and workbook, along with morning tea, lunch, afternoon tea provided each day.

**3 – Register Your Name:**

**By Phone:** (+61) 0402 731 563  
**By Email:** [info@lifetime-reliability.com](mailto:info@lifetime-reliability.com)  
**By Fax:** (+61 8) 9457 8642  
**By Post:** General Training Pty Ltd,  
 PO Box 2091,  
 Rossmoyne, Western Australia, 6148

**4 – Your Payment Options to Make Payment:**

**A. Electronic Fund Transfer to:**

Bank: National Australia Bank  
 Branch: Bull Creek Branch Office  
 Shop 33 Stockland Bull Creek  
 Cnr South Street and Benningfield Road  
 Bull Creek, WA 6149  
 Account: General Training Pty Ltd  
 BSB No: 086-138  
 Account No: 580663221  
 Swift Code: NATAAU3306P

**B. Cheque** in favour of 'General Training Pty Ltd' sent to postal address

**C. Credit Card** secure online at [www.paypal.com.au](http://www.paypal.com.au) with Visa or MasterCard (*fee applies*)

On-line Payment email address: [info@lifetime-reliability.com](mailto:info@lifetime-reliability.com) for Order/Item # - PEW Asset Management

**D. Purchase Order:** .....  
*(Only in Australia)*

**5 – Delegate Details (One form per person attending):**

Name: .....

Job Title: .....

Company: .....

Street/Box: .....

Suburb: .....

Zip/Post Code: ..... State/Country: .....

Email: .....

Phone No: .....

**Cancellation Policy:**

**Cancellation by Attendee:** Substitute delegate welcome. To cover administration costs, printing costs and training venue penalties there is 80% refund with prior 30 days notice of cancellation, 70% refund between 30-15 days, 50% refund after 15 days. 25% refund for non-attendance. Discounted seats are charged at full fee cancellation rates.

**Cancellation by Training Provider:** A minimum number of people is required to run a course. If numbers are insufficient the course will be cancelled. There is a full refund or free registration to next, or another course of equal value if a course is cancelled.

**How did you find out about the course?** .....